

# 90 Series

## PVC CONTROL VALVES

Exclusive valves series (3" – 6") suitable for underground and above-ground installation in open fields and greenhouses.



Superior performances



Exceptional efficiency



Improved resistance

## / Benefits & Features

- **Superior performance**      Excellent regulation capabilities achieved by a flexible diaphragm mechanism that is designed to allow maximal to near zero flow while operating at very low head losses
- **Exceptional efficiency**      Available with full selection of control functions and various end connections  
  
The optional underground installation reduces both costs and friction losses by eliminating the use of elbow joints
- **Improved resistance**      Resistance to corrosive fluids is accomplished by using high quality corrosion-free materials, both externally and internally  
  
Optional materials for highly concentrated chemicals protection

## / Specifications & Recommendations

- **Maximum Pressure** – for 3" & 4" valves: 8bar (115psi), for 6" valves: 10bar (145psi)
- **Minimum Recommended Flow** – 1m<sup>3</sup>/h (5gpm)
- **Minimum Operating Pressure** – 0.3bar (4psi)\*
- **Maximum Operating Temperature** – 40°C (104°F)

\* Available with low pressure diaphragm

→ Hydraulic Performance

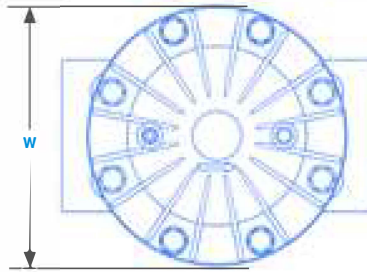
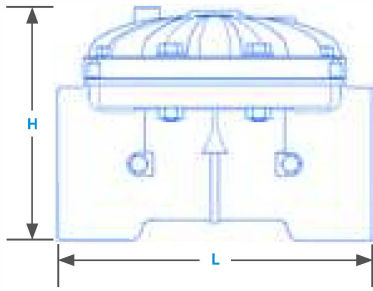
Valve Size	inch	3	4	6
	mm	80-90	100-110	150-160
Flow rate factor*	Kv	155	215	480
	Cv	180	250	560

\* In order to calculate the head loss at any desired flow rate, use the following equation: Head loss = (Flow rate/Flow rate factor)<sup>2</sup>

→ Technical Dimensions

Diameter		inch	3	4	6
		mm	80-90	100-110	150-160
Height	H	mm / inch	208 / 8.06	208 / 8.06	382 / 15
Width	W	mm / inch	229 / 9.16	229 / 9.16	260 / 10.40
Length	L	mm / inch	258 / 10.18	278 / 10.93	360 / 14.18
Volume control chamber		cc / gal	681 / 0.18	681 / 0.18	2,575 / 0.68
Weight		kg / lbs	4 / 8.8	4.2 / 9.2	11.8 / 26

\* PVC SW valves are 10mm larger then the pipe to allow solvent welding



→ Material Specifications

#	Part	Material	*Optional
1	Body	uPVC	-
2	Bonnet	Glass reinforced Polyamide	PPS
3	Diaphragm**	Natural rubber	GRP, ALD, EPDM
4	Spring	SST 302	SST 316

\* Optional parts for special chemical resistance

\*\* Wide selection of pressure ranges

→ Head Loss

3 Way Valves

